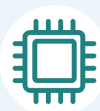


*GPON ONU**1GE****FD511G-G-F311***

High Speed CPU



Low Power Consumption



Optional Shell Supply



Software Customization

## Brief Views

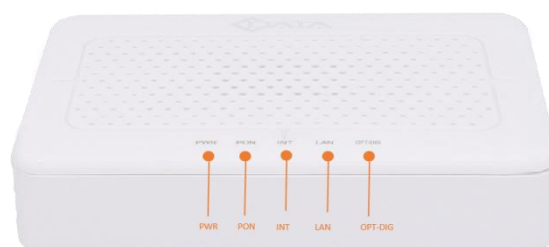
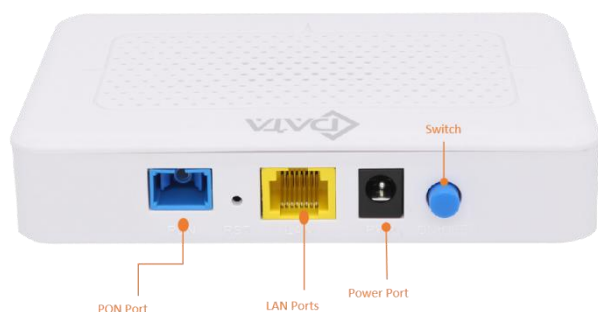
FD511G-G-F311 data type ONU is one of the GPON optical network unit design to meet the requirement of the broadband access network. It apply in FTTH/FTTO to provide the data, video service based on the GPON network.

FD511G-G-F311 features high-performance forwarding capabilities to ensure excellent experience with Internet and HD video services. It has good third-party compatibility to work with the third party OLT, such as Huawei/ZTE/Fiberhome/Alcatel-Lucent. It provides a perfect terminal solution and future-oriented service supporting capabilities for FTTH deployment.

## Functional Feature

- In compliant with ITU - T G.984 standard
- Support ONU auto-discovery/Link detection/remote upgrade of software
- Support multiple registration methods
- Support port VLAN configuration
- Support mac-address learning
- Support port-based rate limitation and bandwidth control
- Support broadcasting storm resistance function
- Support igmp transparent/snooping/proxy mode
- Support Dynamic Bandwidth Allocation (DBA)
- EMS network management based on SNMP ,convenient for maintenance
- Support power-off alarm function ,easy for link problem detection

## Product Interface and LED



## LED Definitions

Indicator		Description
PWR	Power status	On: The ONT is power on; Off: The ONT is Power off;
PON	ONT Register	On: Success to register to OLT; Blinking: In process of registering to OLT; Off:Failed to register to OLT or no normal optical signal input;
LAN	LAN port status	On: Ethernet connection is normal; Blinking: Data is being transmitted through the Ethernet port; Off: Ethernet connection is not set up;
INT	Internet status indicator	On: The routed WAN Internet access service is normal. Off: The routed WAN Internet access service is abnormal.
OPT-DIG	Light intensity indicator	On: higher than ONURX maximum threshold; flashing: lower than ONU RX minimum threshold; off: ONU RX is within the normal threshold range.

## Hardware

### ● GPON Port

- SC/APC single mode single fiber
- GPON: FSAN G.984.2 standard, Class B+
- GPON: 2.488Gbps/1.244Gbps downstream/upstream
- Wavelength :  
Transmit: 1310nm Receiver: 1490nm
- Receiving sensitivity :  
GPON: -28dBm
- Saturated power :  
GPON: -8dBm
- Transmitting power :  
GPON: 0.5~5dBm

### ● User Port(LAN)

- 1\*10/100/1000 Mbps Auto-negotiation RJ45 ports
- Full Duplex / Half-Duplex
- RJ45, Auto-MDI/MDI-X
- Transmission Distance 100 Meter

- **Indicators**

- PWR / PON / LOS / INT/OPT-DIG

- **Power**

- External 12V/0.5A DC power supply adapter
- Power consumption: <4.5W

- **Dimension and Weight**

- Item Dimension:
- 125mm(L) x80mm(W) x28mm (H)
- Item weight: about 125g

- **Environmental Specifications**

- Operating temperature: 0 to 40° C
- Operating humidity: 10% to 90%(Non-condensing)

## Software

- **Management**

- GPON:OMCI / WEB / TR069 / Telnet

- **Register**

- Auto-discovery/Link detection/Remote upgrade software
- Auto/MAC/SN/LOID+Password authentication

- **Switch**

- MAC address learning
- MAC address learning account limit
- Broadcast storm suppression
- VLAN transparent/tag/translate/trunk

- **Multicast**

- IGMP V2
- IGMP VLAN
- IGMP transparent/Snooping/Proxy

- **Security**

- Firewall
- MAC address/URL filter
- Remote WEB/Telnet access control

## Application

- Typical Solution: FTTH
- Typical Business: Internet

